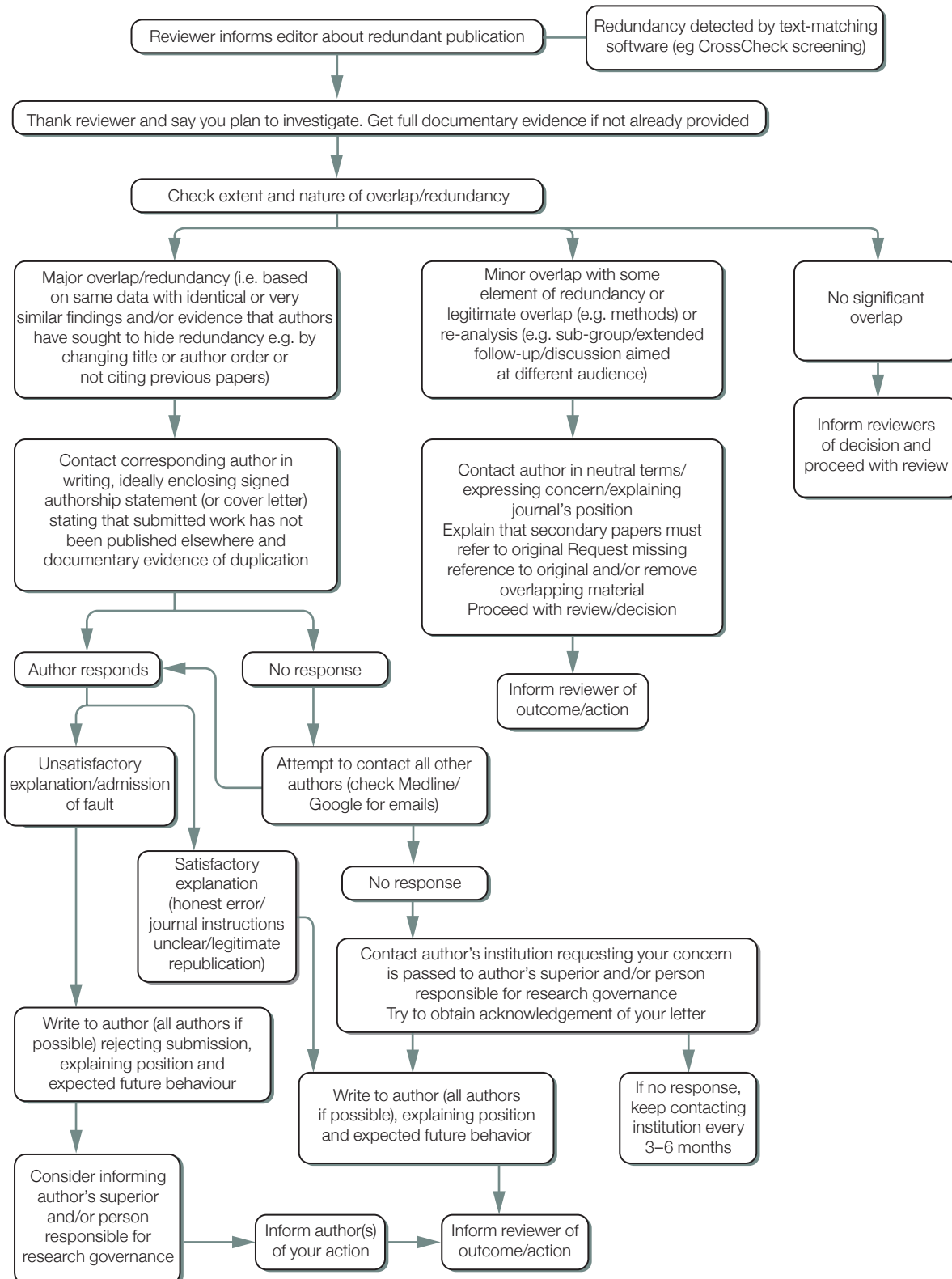


What to do if you suspect redundant (duplicate) publication

(a) Suspected redundant publication in a submitted manuscript



Notes

- The instructions to authors should state the journal's policy on redundant publication.
- It may be helpful to request the institution's policy.
- Ask authors to verify that their manuscript is original and has not been published elsewhere.
- International Committee of Medical Journal Editors (ICMJE) advises that translations are acceptable but MUST reference the original.

Further reading

COPE Cases on redundant/duplicate publication: [http://publicationethics.org/cases/?f\[0\]=im_field_classifications%3A829](http://publicationethics.org/cases/?f[0]=im_field_classifications%3A829)

Duplicate publication guidelines www.biomedcentral.com/about/duplicatepublication (nb. the definitions only apply to BMC and may not be accepted by other publishers).

Links to other sites are provided for your convenience but COPE accepts no responsibility or liability for the content of those sites

Version one

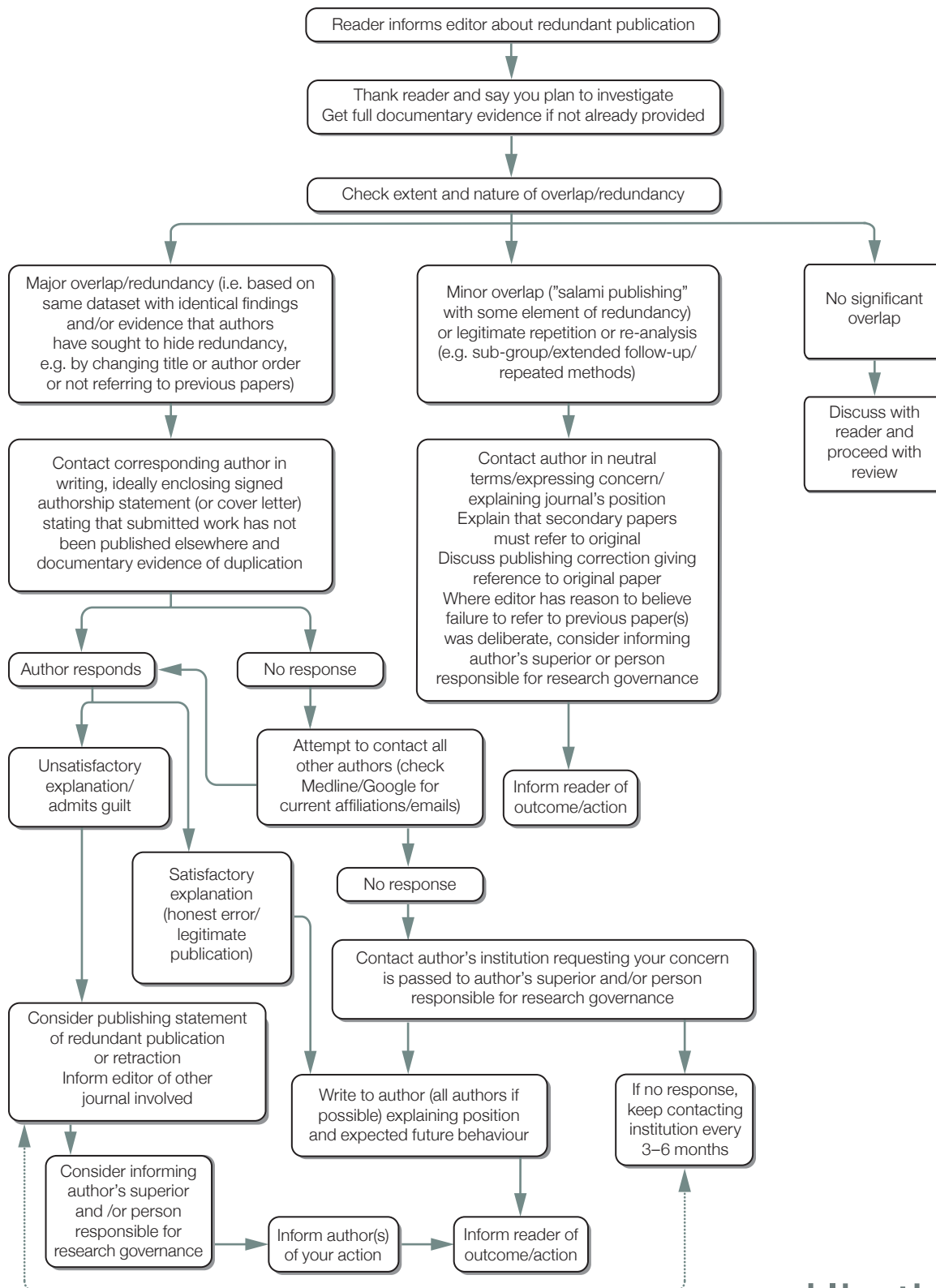
Published 2006 <http://bit.ly/2mf6g0>

Current version

November 2015

What to do if you suspect redundant (duplicate) publication

(b) Suspected redundant publication in a published manuscript



Notes

- The instructions to authors should state the journal's policy on redundant publication.
- Asking authors to sign a statement or tick a box may be helpful in subsequent investigations.
- ICMJE advises that translations are acceptable but MUST reference the original. Editors may consider publishing a correction (i.e. the link to the original article) rather than a retraction/notice of duplicate publication in such cases.

Version one

Published 2006
<http://bit.ly/2fCptzz>

Current version

November 2015

Originally developed for COPE by Liz Wager of Sideview (www.lizwager.com) © 2016 Committee on Publication Ethics (CC BY-NC-ND 3.0)

A non-exclusive licence to reproduce these flowcharts may be applied for by writing to: cope_administrator@publicationethics.org