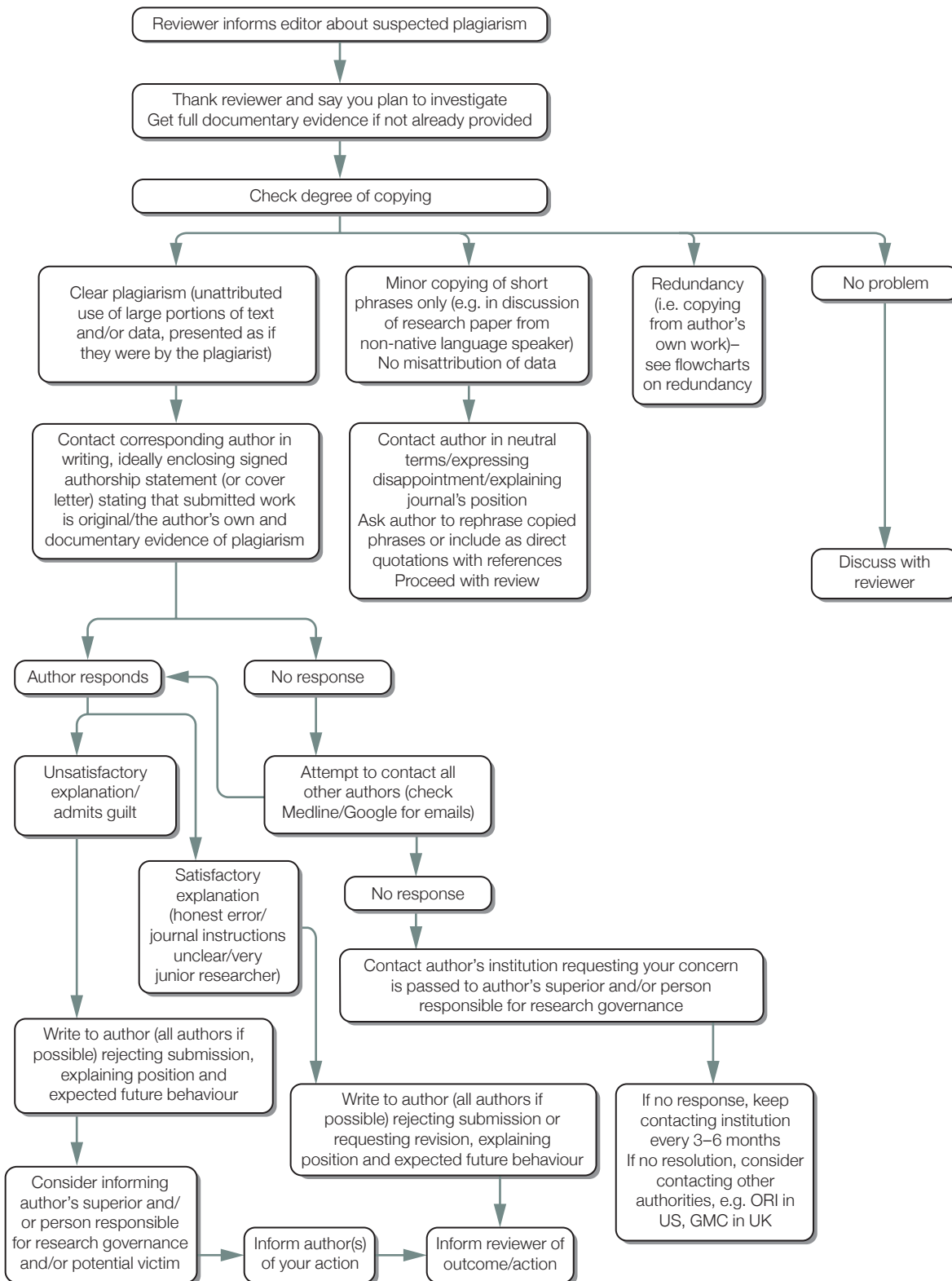


What to do if you suspect plagiarism

(a) Suspected plagiarism in a submitted manuscript

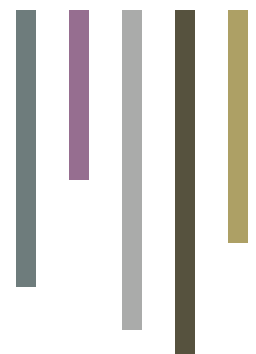
Note

The instructions to authors should include a definition of plagiarism and state the journal's policy on it



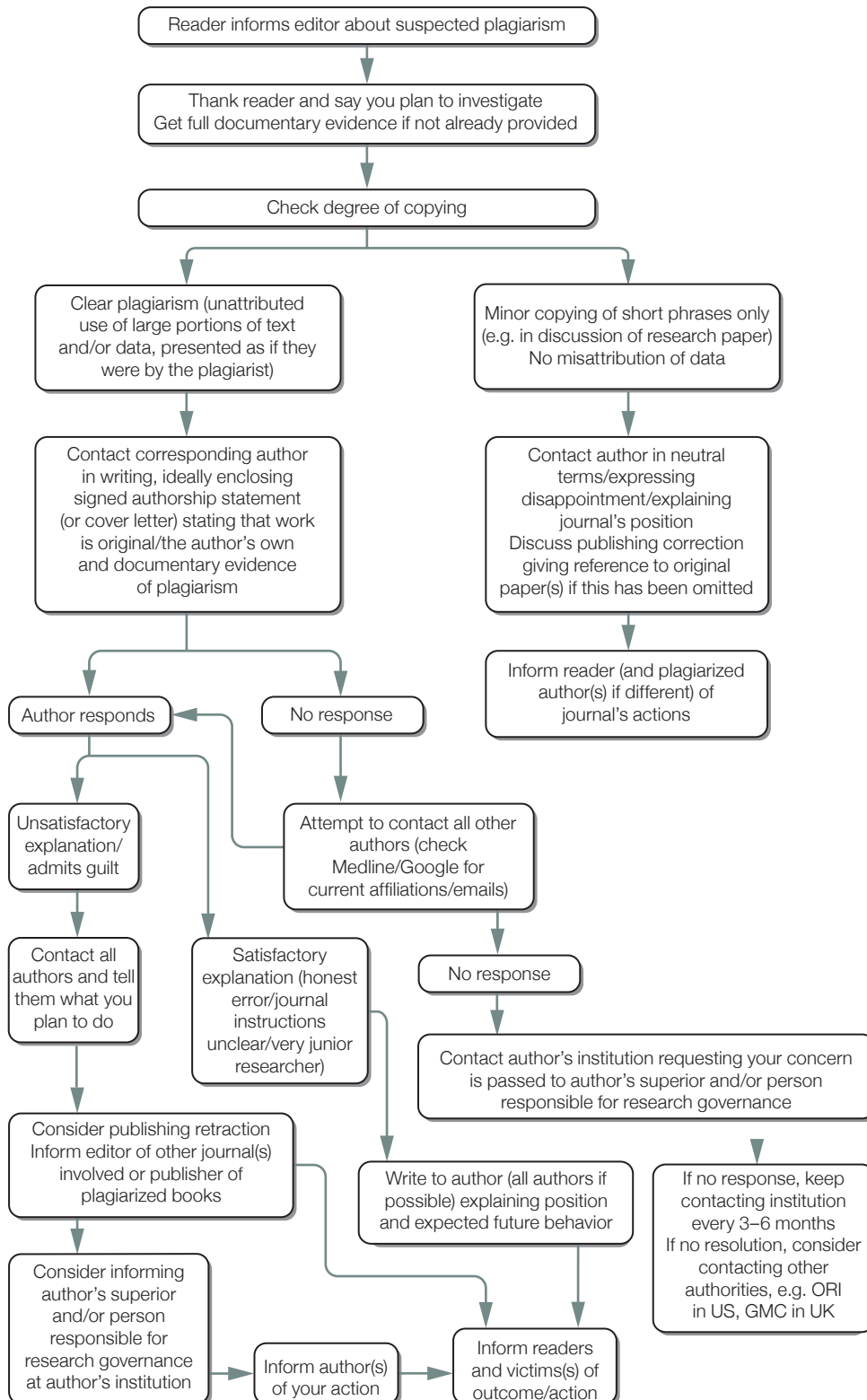
Developed for COPE by Liz Wager of Sideview (www.lizwager.com) © 2013 Committee on Publication Ethics First published 2006

A non-exclusive licence to reproduce these flowcharts may be applied for by writing to: cope_administrator@publicationethics.org



What to do if you suspect plagiarism

(b) Suspected plagiarism in a published manuscript



Note
The instructions to authors should include a definition of plagiarism and state the journal's policy on it

Developed for COPE by Liz Wager of Sideview (www.lizwager.com) © 2013 Committee on Publication Ethics First published 2006

A non-exclusive licence to reproduce these flowcharts may be applied for by writing to: cope_administrator@publicationethics.org